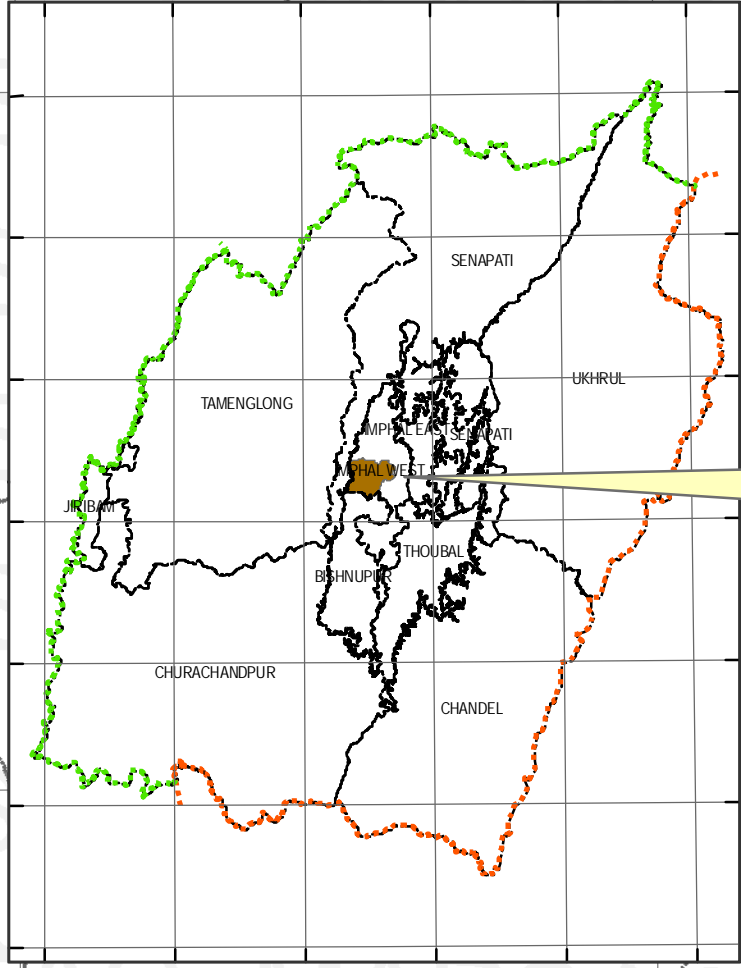
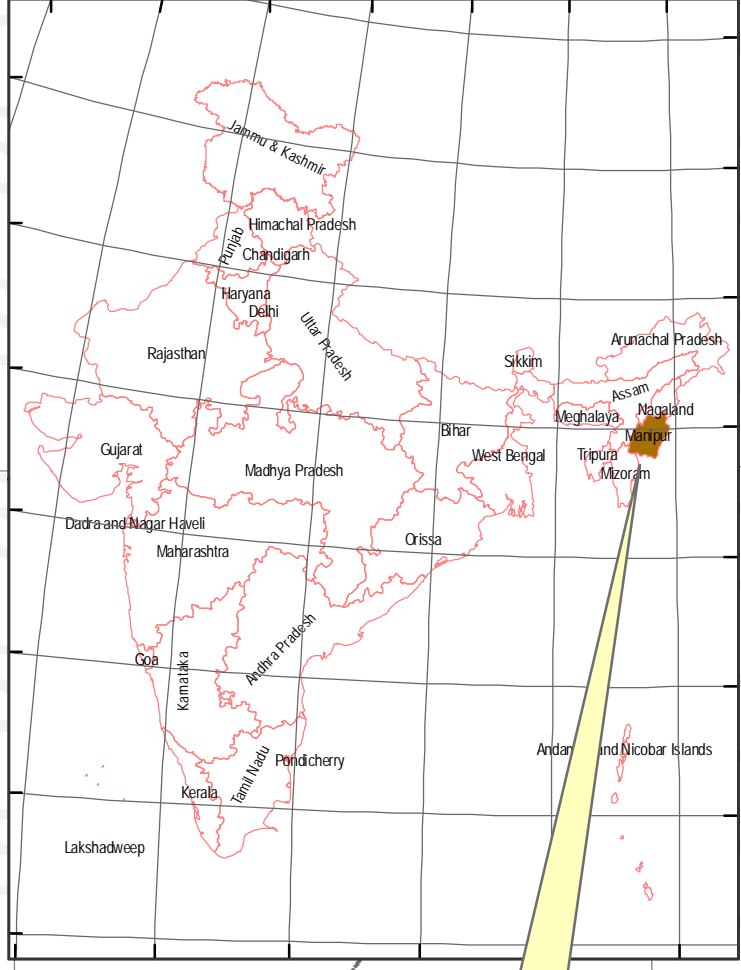
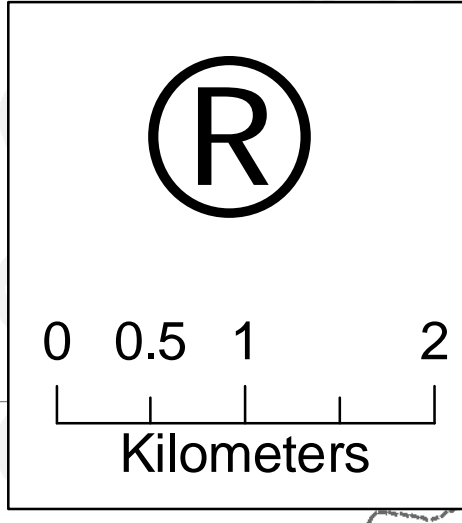
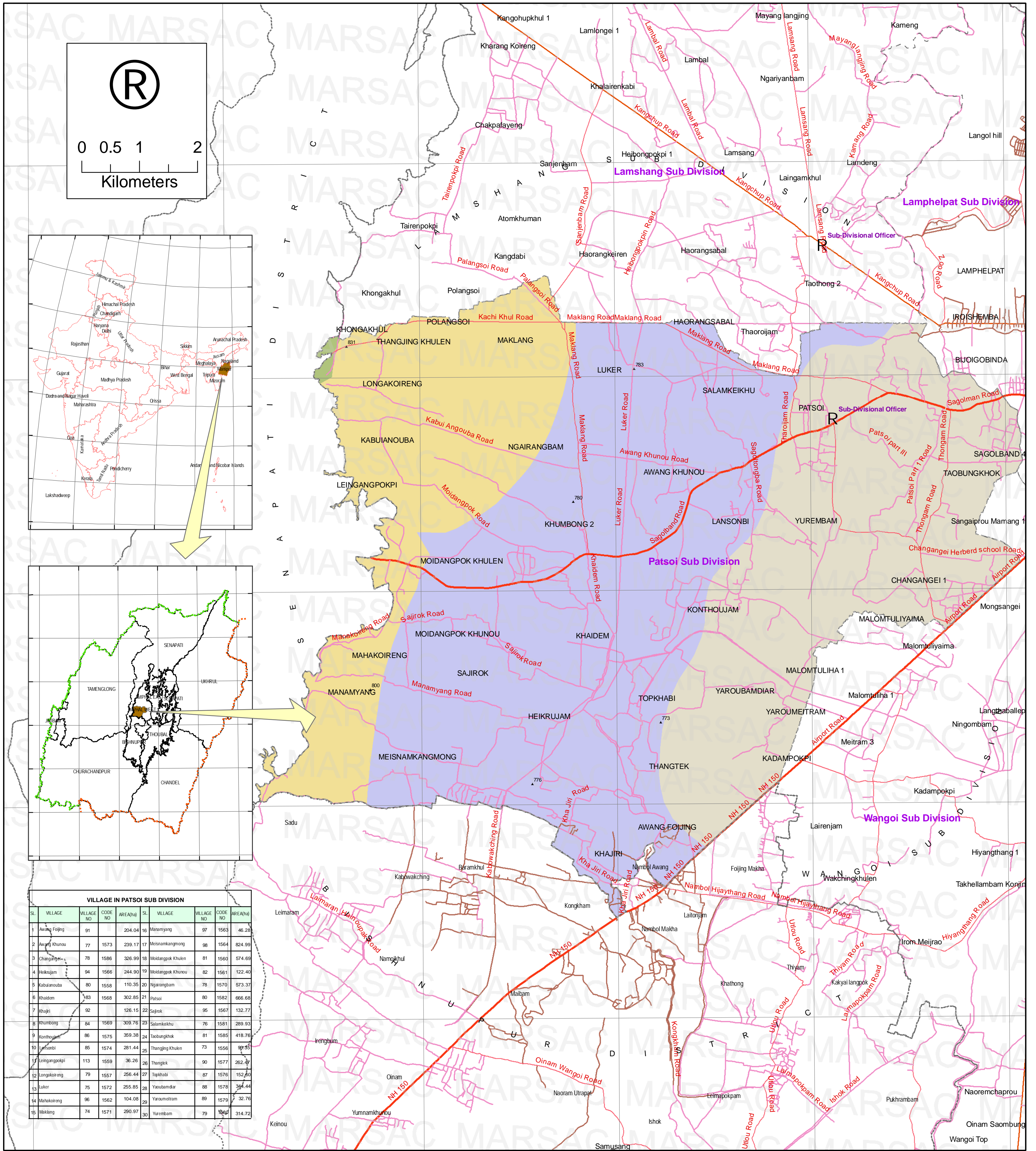


SOIL

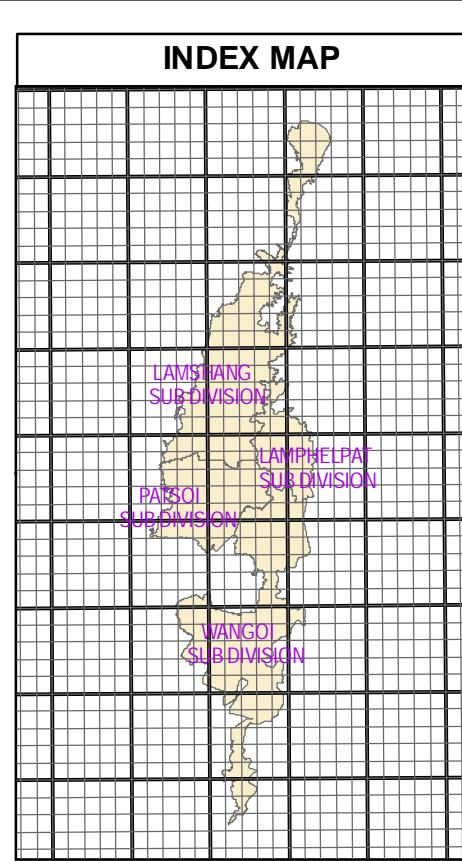
PATSOI SUB DIVISION , IMPHAL WEST DISTRICT , MANIPUR

(RESTRICTED CIRCULATION AMONG INTENDED AND AUTHORISED USERS ONLY)



VILLAGE IN PATSOI SUB DIVISION							
Sl.	VILLAGE	VILLAGE NO.	CODE NO.	AREA(ha)	Sl.	VILLAGE	VILLAGE NO.
1	Awang Fong	91		204.04	16	Mitangyang	97
2	Awang Khunou	77	1573	239.17	17	Meisnamkangmang	98
3	Changang	78	1586	326.99	18	Moidangpok Khulen	81
4	Heikujam	94	1566	244.90	19	Moidangpok Khunou	82
5	Kabuanouba	80	1558	110.35	20	Ngairangbam	78
6	Khadem	183	1568	302.65	21	Patsoi	80
7	Khaji	92		126.15	22	Sajirok	95
8	Khumbong	84	1569	309.76	23	Salamkeikhu	76
9	Konhoujam	86	1575	359.38	24	Thangtek	81
10	Luker	85	1574	281.44	25	Thangjing Khulen	73
11	Maidangpokpi	113	1559	96.26	26	Thangtek	90
12	Longakoireng	79	1557	256.44	27	Topkhabi	87
13	Luker	75	1572	255.85	28	Yaroubamdiar	88
14	Mahaikoireng	96	1562	104.08	29	Yaroumetram	89
15	Maklang	74	1571	290.97	30	Yaroubamdiar	79

LEGEND			
DESCRIPTION	COLOUR SYMBOL	PARTICULAR	COLOUR SYMBOL
Fine Typic Humaquepts Clayey -skeletal Umbric Dystrachrepts		Sub Division Boundary	
Fine, Umbric Dystrachrepts Fine Typic Haplohumults		Village Boundary	
Fine, Typic Haplohumults, Fine Loamy, Umbric Dystrachrepts		Elevation in Meters	
Fine, Typic Haploquepts Fine, Ruptic Ultic Dystrachrepts			
Fine, Typic Haplohumults, Fine, Typic Haplohumults			
Fine, Typic Paleudults Clayey-skeletal, Typic Odorthents			
Marshy land			
Very fine Mollic Haploquepts Fine, Fluvaquentic Humaquepts			
Very fine, Mollic Haploquepts Fine typic Haploquepts			



SUB DIVISION PROFILE (BASED ON CENSUS 2001)					
Sub Division	Lamshang	Patsoi	Lamphelpat	Wangoi	Total
Area (in Sq. Km)	198	83	60	178	519
Total Population	57,589	7,115	10,53,890	1,20,298	24,77,784
Total number of town	2	2	2	5	11
Total number of Villages	61	33	10	30	134
Distance from District HQ (in Km)	7	8	0	15	
Code Number	0001	0002	0003	0004	

Patsoi Sub-Division is Located between
 Latitude :- 24°48'57.426"N to 24°42'58.508"N
 Longitude :- 93°54'8.314"E to 93°46'16.762"E

LEGEND					
LEVEL I	LEVEL II	LEVEL III	SYMBOL COLOUR	LENGTH (Km)	
Road	BT- Metalled - Double Lane BT- Metalled - Single Lane Kutcha	National Highway		13.92 Km	
		State Highway			
		District Road		21.42 Km	
		Municipality Road		5.61 Km	
Water Bodies	River / Stream / Drainage/ Canal	River		52.21 Km	
		Stream		82.11 Km	
		Lined/Unlined Canal		22.12 Km	
		Lined/Unlined Drainage			

NAME OF THE PROJECT :	Pilot Project on Integrated Land Management and Administrative Planning (LLMAP) for 4 Valley District of Manipur State
Sponsored by	Department of Information Technology, Govt. of India, New Delhi
Prepared by	Manipur Remote Sensing Applications Centre (an autonomous orgn. under the Department of Science & Technology, Govt. of Manipur)
Administrative Agency	Department of Science & Technology, Govt. of Manipur
Sources	1. Satellite Data - Quick Bird Image (61cm resolution) 2. Toposheet - SOI - Elevation 3. Census of India 2001 - Village List 4. PWD - Road Classification
Datum :-	WGS 84
Map Projection :-	UTM Zone 46 N

Map is prepared in the scale of 1 : 4,000. This map is printed in the scale of 1:40,000