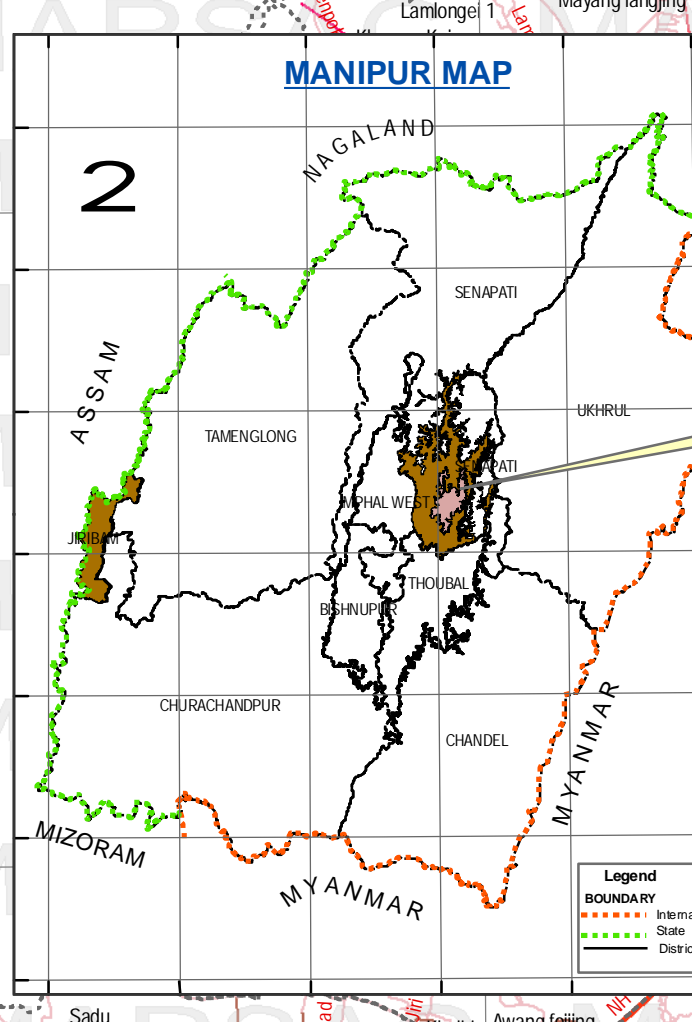
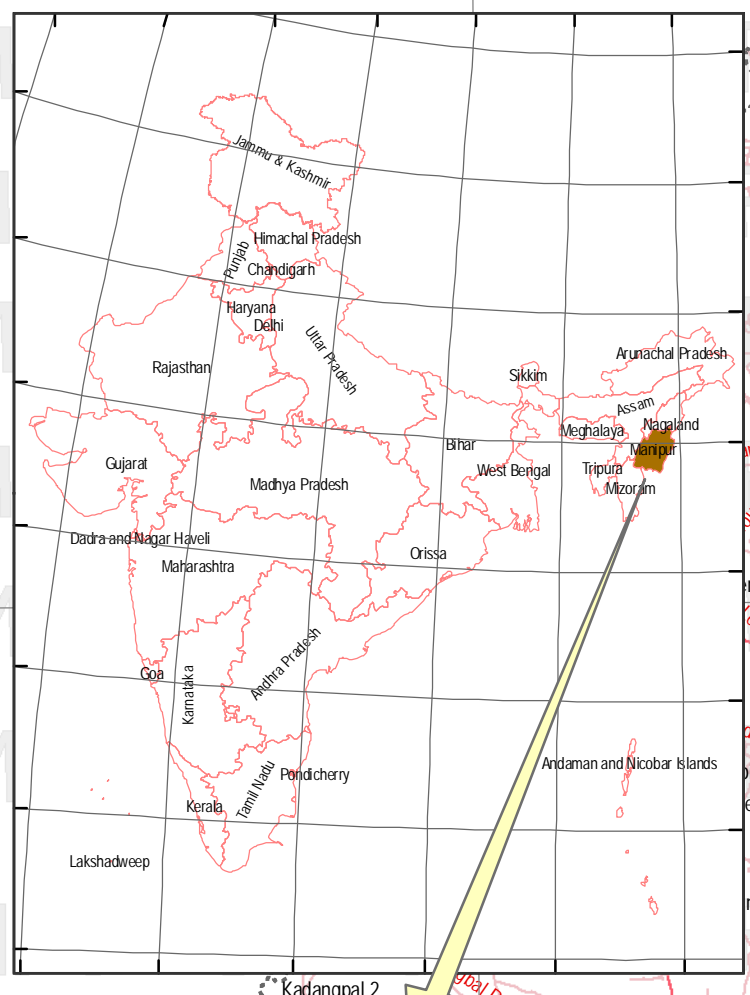
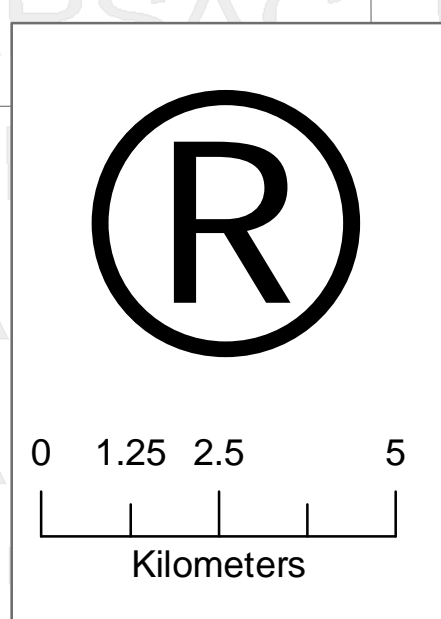
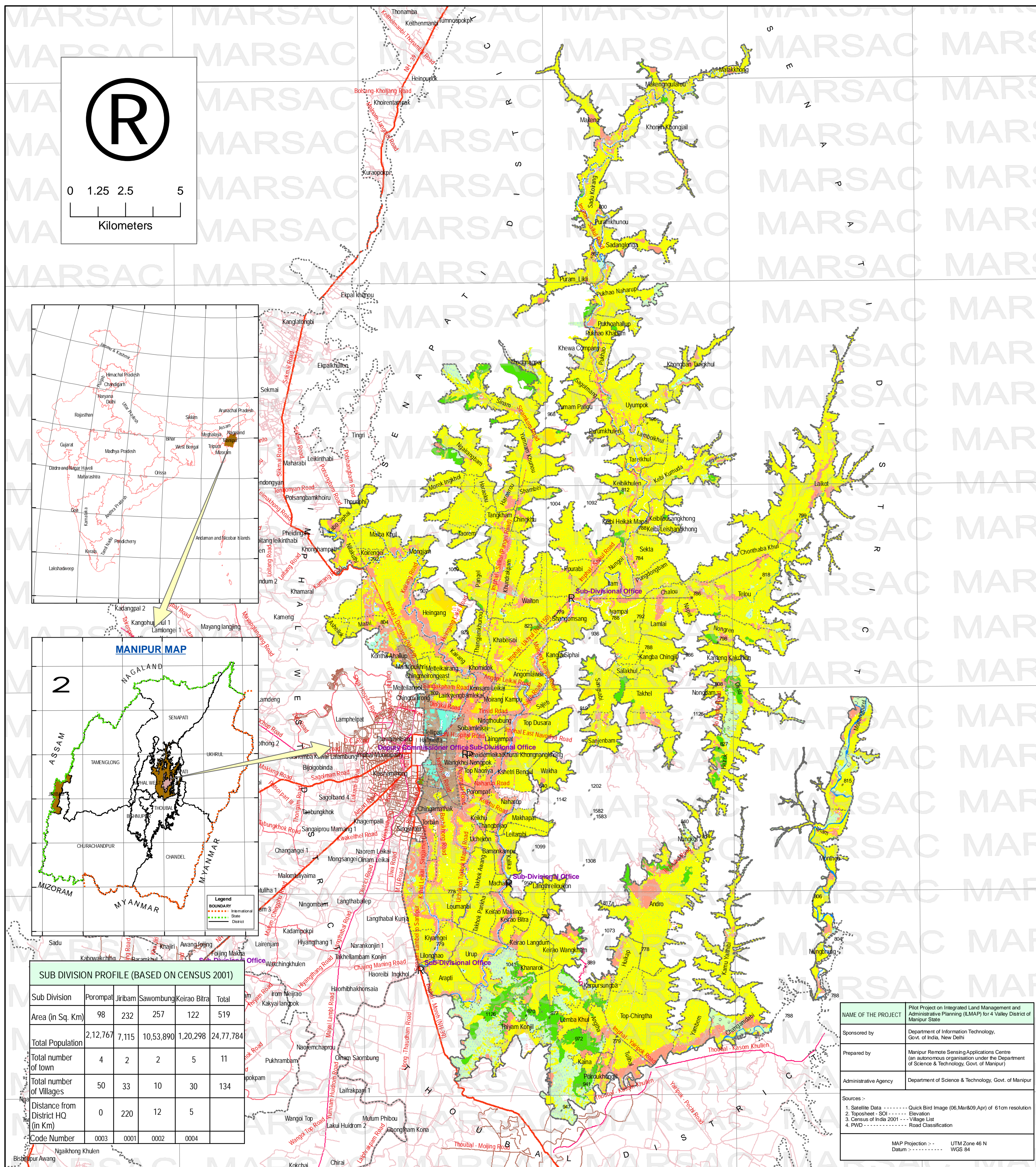


LAND USE / LAND COVER

IMPHAL EAST DISTRICT, MANIPUR

(RESTRICTED CIRCULATION AMONG INTENDED AND AUTHORISED USERS ONLY)



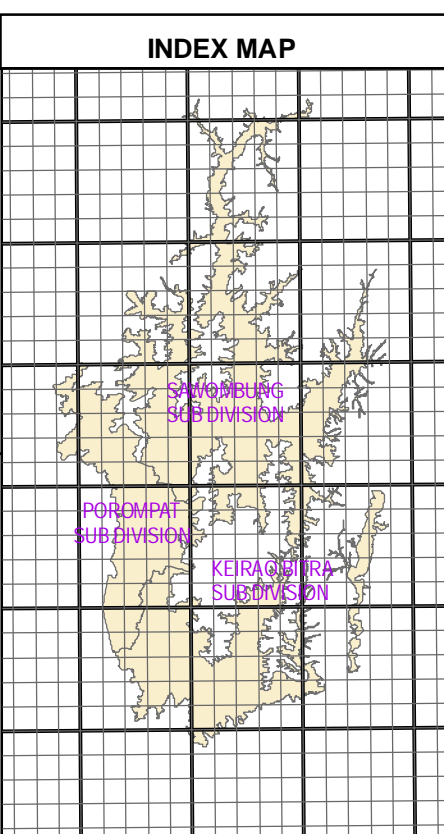
SUB DIVISION PROFILE (BASED ON CENSUS 2001)						
Sub Division	Porompat	Jiribam	Sawmbung	Keirao	Bitra	Total
Area (in Sq. Km)	98	232	257	122	519	
Total Population	2,12,767	7,115	10,53,890	1,20,298	24,77,784	
Total number of town	4	2	2	5	11	
Total number of Villages	50	33	10	30	134	
Distance from District HQ (in Km)	0	220	12	5		
Code Number	0003	0001	0002	0004		

NAME OF THE PROJECT	Pilot Project on Integrated Land Management and Administrative Planning (LMAP) for 4 Valley District of Manipur State
Sponsored by	Department of Information Technology, Govt. of India, New Delhi
Prepared by	Manipur Remote Sensing Applications Centre (an autonomous organisation under the Department of Science & Technology, Govt. of Manipur)
Administrative Agency	Department of Science & Technology, Govt. of Manipur

Sources :-
 1. Satellite Data Quick Bird Image (06.Mar/09.Apr) of 61cm resolution
 2. Toposheet - S.O.I Elevation
 3. Census of India 2001 Village List
 4. P.W.D Road Classification

MAP Projection :- UTM Zone 46 N
 Datum :- WGS 84

LEGEND				
LEVEL I	LEVEL II	LEVEL III	SYMBOL COLOUR	AREA(ha) LENGTH(Km)
Agriculture Land	Crop Land	Kharif + Rabi	[Yellow]	46108.81 ha
	Pisciculture	Kharif	[Light Yellow]	427.03 ha
Built Up Land	Built Up - Urban	Pisciculture	[Light Green]	741.71 ha
	Built Up - Rural	Residential	[Light Blue]	80.89 ha
		Recreational	[Light Purple]	3.42 ha
Forest	Evergreen / Semi Evergreen	Commercial	[Light Orange]	7125.36 ha
		Degraded	[Light Green]	523.19 ha
	Scrub Land/Shrub Forest	Dense Forest	[Dark Green]	4974.32 ha
Wastelands	Open Forest	Open Forest	[Light Green]	4627.34 ha
		Land with Scrub	[Light Green]	327.45 ha
Wetlands	Marshy/Swampy	Pond	[Light Blue]	10.57 ha
		Lake	[Light Blue]	466.53 ha
Waterbodies	Lakes / Ponds	Lake	[Light Blue]	52.90 ha
	Reservoir / Tanks	Reservoir	[Light Blue]	
	Canal	Lined / Unlined Canal	[Light Blue]	196.34 Km



IMPHAL-EAST DISTRICT-CODE 07 (BASED ON CENSUS 2001)		
PARTICULAR	MANIPUR	IMPHAL EAST
Area in Sq. Km	22327	709
Growth 1991-2001	24.86	19.49
Density	103	557
Sex Ratio	974	991
Sex Ratio 0-6	957	963
Literacy	70.53	75.45
Female Literacy	60.53	65.45
Main Workers	69.76	67.92

Imphal East District is Located between
 Latitude :- 25°5'31.995"N to 24°39'45.25"N
 Longitude :- 94°8'49.324"E to 93°53'47.559"E

LEGEND				
LEVEL I	LEVEL II	LEVEL III	SYMBOL COLOUR	AREA(HA) LENGTH(KM)
Waterbodies	River / Stream / Drainage	River-Wet	[Blue]	195.34 Km
		River-Dry	[Light Blue]	65.12 Km
		Stream	[Light Blue]	38.38 Km
Quarry	Quarry	Lined / Unlined Drainage	[Blue]	214.04 Km
		Active	[Light Blue]	2.80 ha
Road	BT- Metalled_ Double Lane	National Highway	[Red]	32.97 Km
		State Highway	[Red]	60.25 Km
	BT- Metalled_ Single Lane	District Road	[Red]	134.33 Km
		Municipality Road	[Red]	1793.05 Km
Others	Drainage, Canal, Roads, Streams	Kutcha Road	[Red]	
		Inter Village Road	[Red]	

PARTICULAR	COLOUR SYMBOL	PARTICULAR	COLOUR SYMBOL
District Boundary	[Dashed Box]	District HQ	P
Sub Division Boundary	[Dotted Box]	Sub Division HQ	R
Village Boundary	[Dotted Line]	Elevation in Meters	▲

Map is prepared in the scale of 1 : 4,000. This map is printed in the scale of 1:107,000