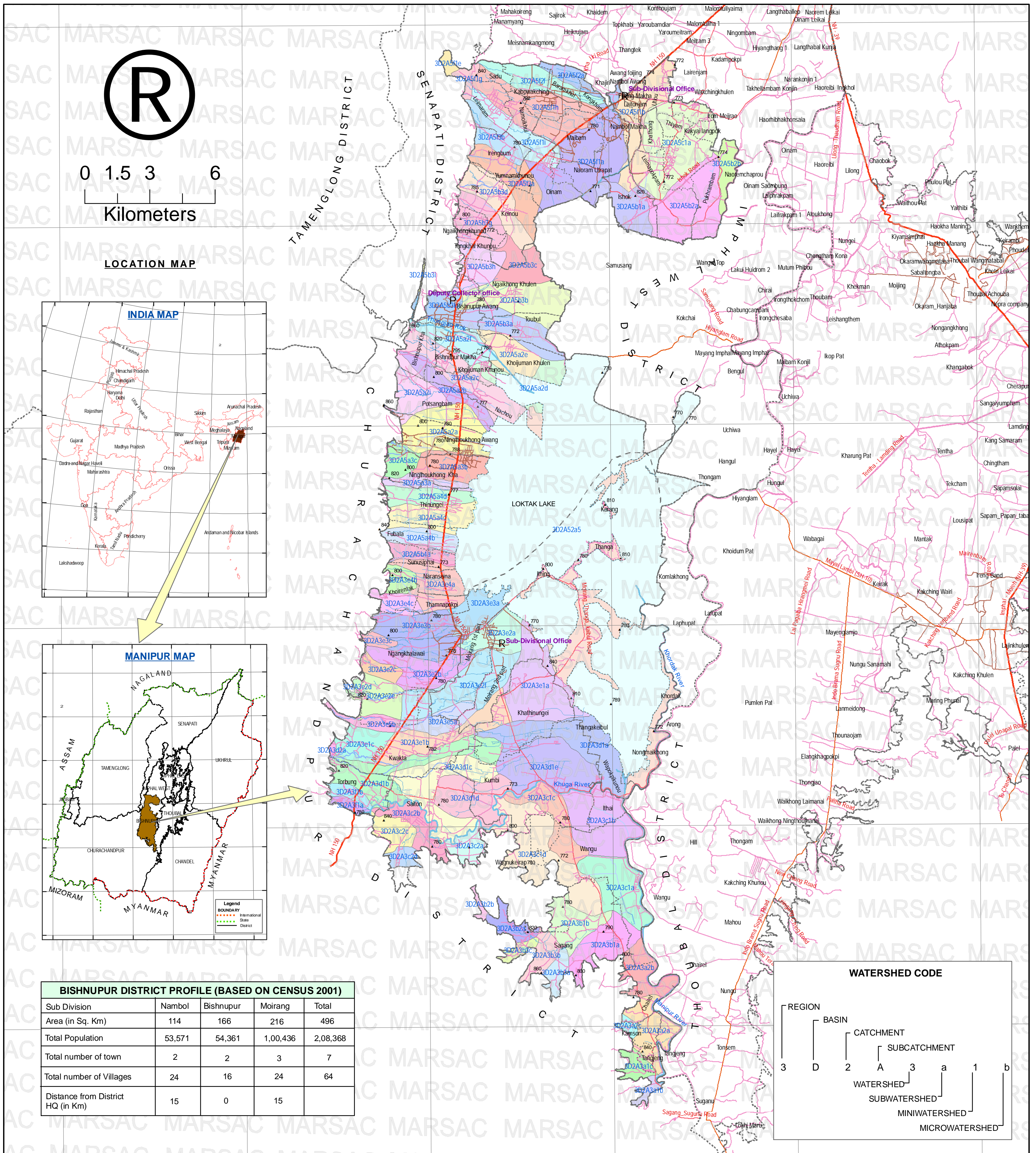


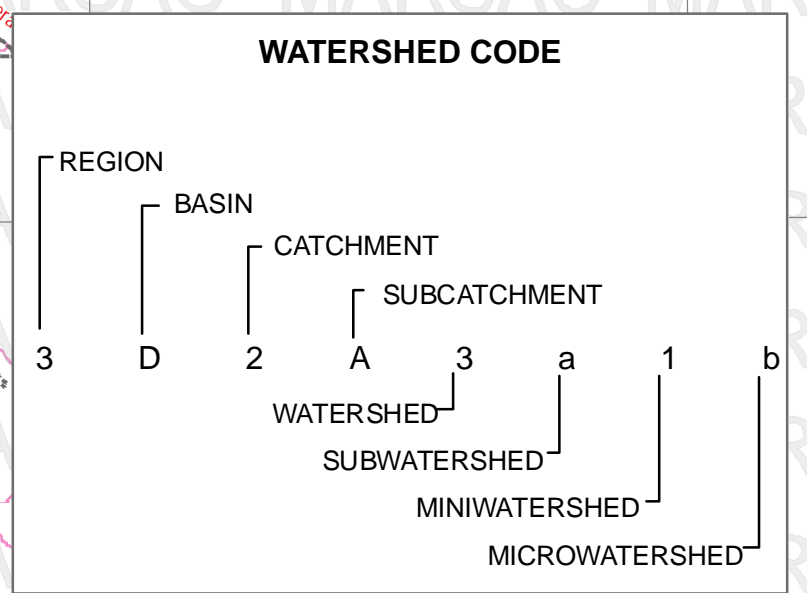
DRAINAGE & WATERSHED

BISHNUPUR DISTRICT, MANIPUR

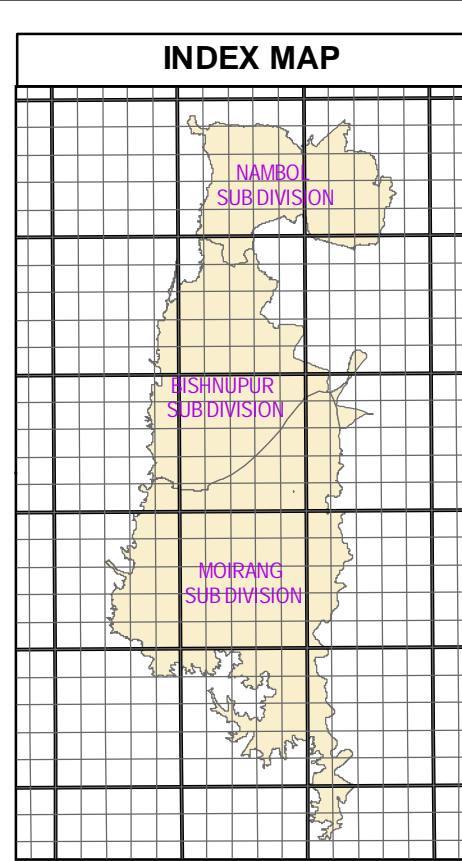
(RESTRICTED CIRCULATION AMONG INTENDED AND AUTHORISED USERS ONLY)



BISHNUPUR DISTRICT PROFILE (BASED ON CENSUS 2001)				
Sub Division	Nambol	Bishnupur	Moirang	Total
Area (in Sq. Km)	114	166	216	496
Total Population	53,571	54,361	1,00,436	2,08,368
Total number of town	2	2	3	7
Total number of Villages	24	16	24	64
Distance from District HQ (in Km)	15	0	15	



LEVEL I	LEVEL II	LEVEL III	COLOUR SYMBOL	AREA (ha) LENGTH (Km)
Water Bodies	River / Stream / Drainage / Canal	River		70,249 Km
		Stream		41,561 Km
		Lined/Unlined Canal		117,531 Km
		Lined/Unlined Drainage		332,941 Km
Road	BT- Metalled - Double Lane BT- Metalled - Single Lane Kutchra	National Highway		39,133 Km
		State Highway		
		District Road		74,192 Km
		Municipality Road		143,408 Km
		Inter Village Road		677,203 Km
PARTICULAR	COLOUR SYMBOL	PARTICULAR	COLOUR SYMBOL	
WaterShed	Difference Colour	Sub Division HQ	P	
District Boundary		Sub Division HQ	R	
Sub Division Boundary		Elevation in Meters	▲	
Village Boundary		Lake		



STATE / DISTRICT PROFILE (BASED ON CENSUS 2001)		
PARTICULAR	MANIPUR	BISHNUPUR
Area in Sq. Km	22327	496
Growth 1991-2001	24.86	15.27
Density	103	420
Sex Ratio	974	993
Sex Ratio 0-6	957	952
Literacy	70.53	67.63
Female Literacy	60.53	55.56
Main Workers	69.76	61.93

Bishnupur District is Located between

Latitude :- 24°44'17.684"N to 24°18'1.238"N

Longitude :- 93°42'12.251"E to 93°53'33.44"E

NAME OF THE PROJECT	Pilot Project on Integrated Land Management and Administrative Planning (ILMAP) for 4 Valley District of Manipur State
Sponsored by	Department of Information Technology, Govt. of India, New Delhi
Prepared by	Manipur Remote Sensing Applications Centre (an autonomous organisation under the Department of Science & Technology, Govt. of Manipur)
Administrative Agency	Department of Science & Technology, Govt. of Manipur
Sources :-	1. Satellite Data ----- Quick Bird Image (06,Mar&09,Apr) of 61cm resolution 2. Toposheet - SOI ----- Elevation 3. Census of India 2001 --- Village List 4. PWD ----- Road Classification 5. Ministry of Agriculture --- Watershed
MAP Projection :-	UTM Zone 46 N
Datum :-	WGS 84

Map is prepared in the scale of 1 : 4,000. This map is printed in the scale of 1:1,07,000